



Taper tube and union connection are simple and low priced flow meter by polycarbonate spouting.

We are always available in stock. FP-100 series flow meter is one of our most popular units and is suitable for cooling water & general water treatment (plants).

Polycarbonate 사출의 Taper tube와 Union Connection의 Simple한 저가형 유량계로 표준유량의 재고를 상시 보유하여 빠른 납기대응이 가능한 수처리 설비 및 냉각수용으로 적합한 일반용 유량계입니다.

## SPECIFICATIONS

- |   |                                      |
|---|--------------------------------------|
| ▷ Measuring Object : Gas, Liquid (Bellow Viscosity 5.0cP) | ▷ 적용유체 : 액체 (Viscosity $\pm 5.0$ 이하) |
| ▷ Range   | ▷ 측정범위                               |
| 15mm : Max. 1.8m <sup>3</sup> /h                          | 15mm : Max. 1.8m <sup>3</sup> /h     |
| 20mm : Max. 3.0m <sup>3</sup> /h                          | 20mm : Max. 3.0m <sup>3</sup> /h     |
| 25mm : Max. 4.0m <sup>3</sup> /h                          | 25mm : Max. 4.0m <sup>3</sup> /h     |
| ▷ Accuracy : $\pm 3\%$ Full Scale                         | ▷ 측정오차 : $\pm 3\%$ Full Scale        |
| ▷ OP. Press : Max 5 kg/cm <sup>2</sup>                    | ▷ 사용압력 : 최대 5 kg/cm <sup>2</sup>     |
| ▷ OP. Temp : 0 ~ 50°C                                     | ▷ 사용온도 : 0 ~ 50°C                    |

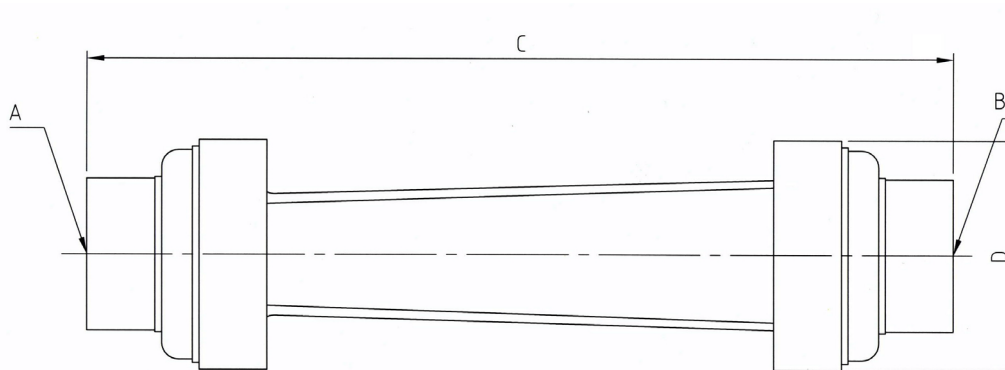
## FEATURES

- |  |                                 |
|--|---------------------------------|
| ▷ Strong Polycarbonate taper tube              | ▷ 고강성 Polycarbonate taper tube  |
| ▷ Superior chemical resistance                 | ▷ 탁월한 내화학성                      |
| ▷ Union structure's simple mode                | ▷ Union 구조의 간단한 체결방식            |
| ▷ Available choice either PVC or SUS 304       | ▷ PVC 혹은 SUS304 재료의 Union 선택 가능 |
| ▷ Double marks of module both liter and gallon | ▷ Liter 및 Gallon의 2중 단위 표시      |
| ▷ Various connection types                     | ▷ 다양한 Connection 종류             |

## APPLICATIONS

- ▷ High pressure & fluctuations in cooling water pump line
- ▷ General water treatment for industry
- ▷ For piping system
- ▷ 높은 압력 및 변동이 심한 냉각수 펌프라인
- ▷ 산업용 수처리 설비
- ▷ 배수용

## DIMENSION



A	B	C	D
15A TS SOCKET	15A TS SOCKET	228	Φ47.57
15A FEMALE PT	20A TS SOCKET	256	Φ68

## ORDERING INFORMATION

FP 1 0 0 - □ □ - □ □  
 ① ② ③ ④

	①Size	②Tube Material	③Connection	④Material
FP100	10A : 3/8"	P : Polycarbonate	R : PT Female	1 : PVC Union 2 : SUS Union 3 : Others
	15 : 1/2"		T : TS Socket	
	20 : 3/4"			
	25 : 1"			